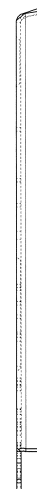
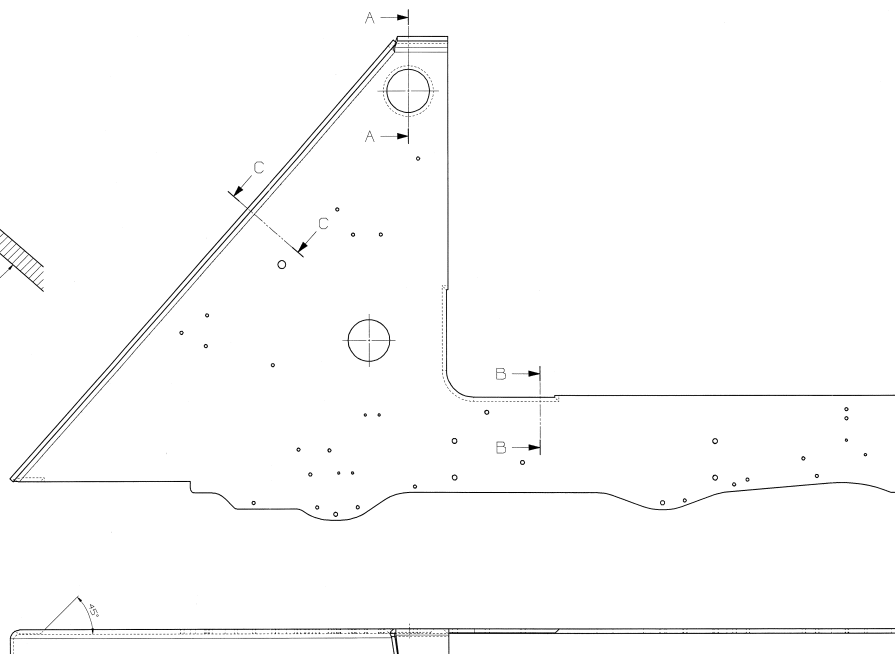
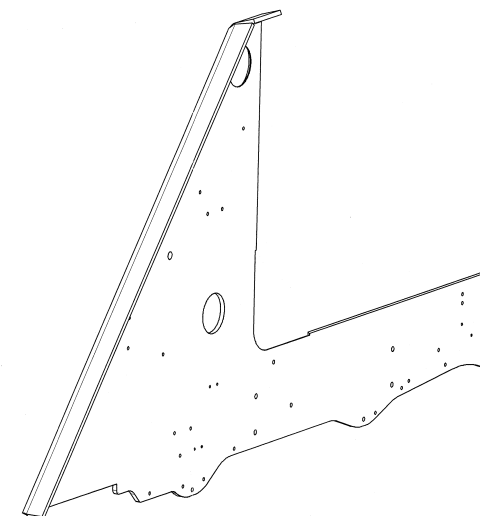
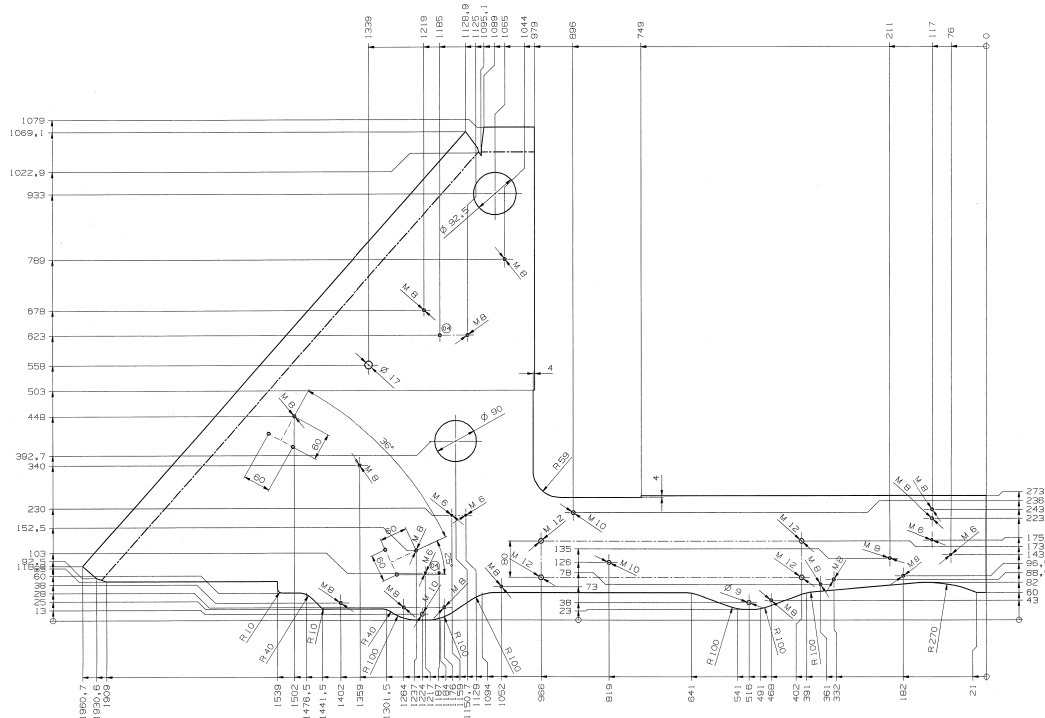


A diagram showing a quarter-circle fillet with a 90-degree angle. The radius is labeled R10, and the length of the fillet is labeled 80.



Technical drawing of a 90° elbow joint. The drawing shows a cross-section of the joint with a 90° angle. Key dimensions include a horizontal length of 60,15, a vertical length of 108, a fillet radius of R10, a horizontal offset of B, and a vertical offset of 11. The drawing also shows a vertical section with a diameter of Ø and a thickness of 9,2.

Figure 10: Detail of a corner joint. The main drawing shows a corner joint with dimensions D and 65 . A section line $D-D$ is indicated. An inset shows "SECTION D-D" with a dimension B .



PROVEDL/A

54

AD	APPROVED FOR
----	--------------

- ŘEZÁNÍ LASEREM
- OHYBÁNÍ

WEOBEC. TOLERANCE

General tolerances for laser cutting
CDM 2330 - 5 - 8, up to 3mm / -8, over 3
General tolerances for nibbling / bending
CDM 1930 - 2 - n



Doc-Nr	2000132252	Version	04
--------	------------	---------	----